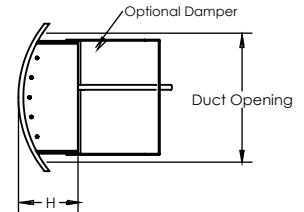
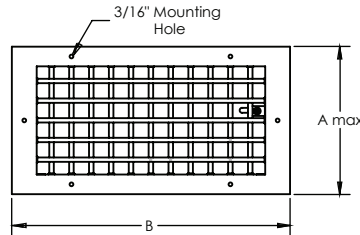
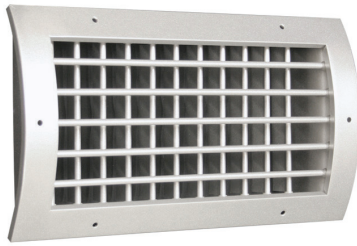


## RGDD-C Series



MODEL	A-MAX	B	H	Duct Opening	Min Duct Diameter	Mount Holes
RGDD-1204-C	5-7/8	13-7/8	3	12 x 4	8	6
RGDD-1804-C		19-7/8		18 x 4		8
RGDD-2404-C		25-7/8		24 x 4		10
RGDD-3004-C		31-7/8		30 x 4		10
RGDD-1206-C	7-7/8	13-7/8	3	12 x 6	10	6
RGDD-1806-C		19-7/8		18 x 6		8
RGDD-2406-C		25-7/8		24 x 6		10
RGDD-3006-C		31-7/8		30 x 6		10
RGDD-1208-C	9-7/8	13-7/8	3	12 x 8	14	6
RGDD-1808-C		19-7/8		18 x 8		8
RGDD-2408-C		25-7/8		24 x 8		10
RGDD-3008-C		31-7/8		30 x 8		10
RGDD-1210-C	11-7/8	13-7/8	4	12 x 10	16	6
RGDD-1810-C		19-7/8		18 x 10		8
RGDD-2410-C		25-7/8		24 x 10		10
RGDD-3010-C		31-7/8		30 x 10		10
RGDD-1212-C	13-7/8	13-7/8	4-1/4	12 x 12	18	8
RGDD-1812-C		19-7/8		18 x 12		10
RGDD-2412-C		25-7/8		24 x 12		12
RGDD-3012-C		31-7/8		30 x 12		12

(Inches measured to the nearest 1/16")

### Standard Material

- Heavy Gauge Aluminum
- Foam Gasket

### Options

- Duct Diameter \_\_\_\_\_
- Extractor Damper

### Notes

- Mounting Screws Included

### Standard Finishes

- #12 anodized powder coat
- #42 gloss black powder coat
- #43 flat black powder coat
- #52 white powder coat
- #62 grey primer powder coat (on field painting)
- #72 silver metallic powder coat
- #99 custom color / color match (paint chip needed)

<b>Project :</b>	<h2>RGDD-C Series</h2> <p>Rectangular Grille Double Deflection Curved Frame Mount</p>	
<b>Architect :</b>		
<b>Engineer :</b>		
<b>Contractor :</b>		<b>Form # : 40062S</b>
<b>Submitted By :</b>	<b>Date :</b>	<b>Drawn By : MH January 2017</b>