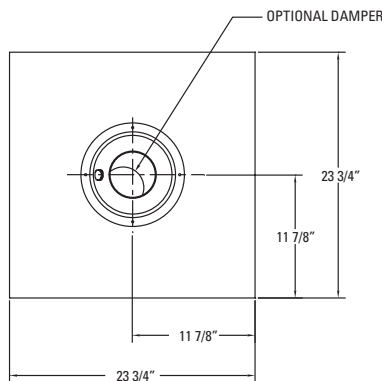
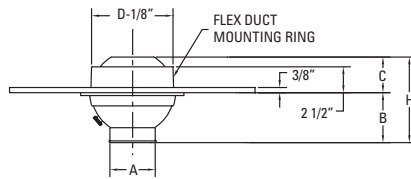


Aluminum Punkah Louver - Lay In Series



(Shown w/ aperture damper)



High Velocity Task Air Outlet

- Low Noise Levels
- Low Pressure Requirements

Adjustability

- Easy Finger Tip Adjustment
- Directional Air Pattern Control:
70 Degree Global Rotation Minimum
±35 Degree Deflection
360 Degree Rotation

Installation

- Installs Easily in T-Bar Ceiling Grid
- Flex Duct Mounting Included

MODEL	Size	A	B	C	D	H
APL-06 / APL-06-LI	6	3	3-3/8	2-1/2	6	5-7/8
APL-08 / APL-08A-LI	8	4-3/8	4-9/16	2-1/2	8	7-1/16
APL-10 / APL-10A-LI	10	5-3/4	5-13/16	2-9/16	10	8-3/8
APL-12 / APL-12A-LI	12	7-3/8	6-5/16	2-11/16	12	9
APL-14 / APL-14A-LI	14	8-5/8	7-7/16	3-13/16	14	11-1/4
APL-16 / APL-16A-LI	16	9-3/4	8-9/16	4-7/16	16	13
APL-18 / APL-18A-LI	18	10-1/2	9-13/16	3-15/16	18	13-3/4
APL-20 / APL-20A-LI	20	12-3/8	11-3/16	4-9/16	20	15-3/4

(Inches measured to the nearest 1/16")

Standard Material

- Heavy Gauge Aluminum
- Stainless Steel Damper Hardware

Notes

- Lay In Ceiling Installation
- Flex Duct Mounting Ring Included
- "A" in Model Name Designates Aperture Damper

Options

- Aperture Damper

Standard Finishes

- #00 mill
- #10 clear anodized
- #12 anodized powder coat
- #42 gloss black powder coat
- #43 flat black powder coat
- #52 white powder coat
- #62 grey primer powder coat (on field painting)
- #72 silver metallic powder coat
- #99 custom color / color match (paint chip needed)

Project :	<h2>APL Series</h2> <p>Aluminum Punkah Louver - Lay In Panel</p>	
Architect :		
Engineer :		
Contractor :	Form # : 20012S	
Submitted By :	Date :	Drawn By : MH January 2005