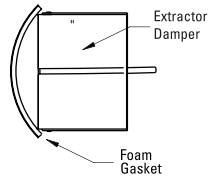
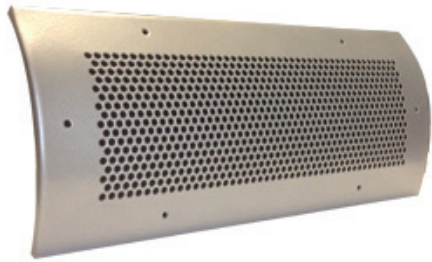
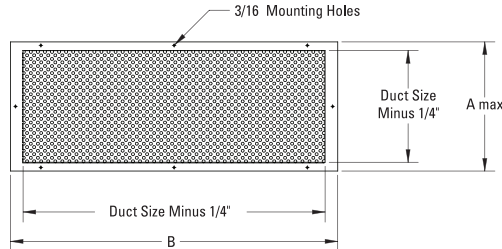


## DUCT MOUNT PERFORATED GRILLE SERIES



**HIGH VELOCITY/  
HIGH ASPIRATION AIR OUTLET**

- Can be Utilized for Supply, Return or Exhaust Air
- Custom Round Duct Mount



MODEL	A	B	DUCT OPENING	MINIMUM DUCT DIA.	MOUNTING HOLES
DMPG-1204	6-1/4	14-1/4	12 X 4	8	6
DMPG-2404	6-1/4	26-1/4	24 X 4	8	10
DMPG-3604	6-1/4	38-1/4	36 X 4	8	12
DMPG-1206	8-1/4	14-1/4	12 X 6	8	6
DMPG-2406	8-1/4	26-1/4	24 X 6	8	10
DMPG-3606	8-1/4	38-1/4	36 X 6	8	12
DMPG-1208	10-1/4	14-1/4	12 X 8	10	6
DMPG-2408	10-1/4	26-1/4	24 X 8	10	10
DMPG-3608	10-1/4	38-1/4	36 X 8	10	12
DMPG-1210	12-1/4	14-1/4	12 X 10	12	8
DMPG-2410	12-1/4	26-1/4	24 X 10	12	12
DMPG-3610	12-1/4	38-1/4	36 X 10	12	14
DMPG-1212	14-1/4	14-1/4	12 X 12	14	8
DMPG-2412	14-1/4	26-1/4	24 X 12	14	12
DMPG-3612	14-1/4	38-1/4	36 X 12	14	14

- INCHES MEASURED TO THE NEAREST 1/16 INCH

### STANDARD MATERIAL

- Heavy Gauge Aluminum
- Foam Gasket

### OPTIONAL MATERIAL

- Stainless Steel #304
- Stainless Steel #316

### OPTIONS

- Duct Diameter \_\_\_\_\_
- Extractor Damper

### NOTES

- Mounting Screws Included

### STANDARD FINISHES

- #00 mill
- #10 clear anodized
- #12 anodized powder coat
- #42 gloss black powder coat
- #43 flat black powder coat
- #52 white powder coat
- #62 grey primer powder coat (on field painting)
- #72 silver metallic powder coat
- #99 custom color / color match (paint chip needed)

PROJECT :	<h1>DMPG SERIES</h1> <p>DUCT MOUNT PERFORATED GRILLE</p>
ARCHITECT :	
ENGINEER :	
CONTRACTOR :	
SUBMITTED BY :	FORM # : 40060S
DATE :	DRAWN BY : MH JANUARY 2005